

OFFECCT

The Essence



тел.: (812) 528 0265, 942 5979
info@bogart.ru www.bogart.ru

ОРГАНИЗАЦИЯ РАБОЧЕГО ПРОСТРАНСТВА
ОСНАЩЕНИЕ ОБЩЕСТВЕННЫХ ЗДАНИЙ

OFFECCT
The Essence

Content

| | |
|-------------------------|-----|
| Introduction | 7 |
| Sustainable development | 18 |
| Quality and production | 24 |
| Easy chairs | 30 |
| Sofas | 52 |
| Chairs | 66 |
| Tables | 80 |
| Soundwave | 96 |
| Room dividers | 106 |
| Accessories | 112 |
| Designers | 120 |
| Showroom | 122 |
| Head office | 124 |
| Alphabetical index | 126 |

Great design for great meetings

7

At OFFECCT, we envision and create products that combine genuine Swedish craftsmanship with high-quality, innovative and sustainable design. We work in close collaboration with some of the world's most renowned designers, who all share OFFECCT's passion for creative and energizing spaces. Together we strive to create elegant and intelligent products using an ecological approach, while always giving a nod of acknowledgement to our Scandinavian design tradition.

Look closely at the word OFFECCT. It is a combination of the Swedish word "offentlig", meaning public, and the English word "affect". It is at our very core then, that we honor the legacy of openness and accessibility evident in our Swedish design heritage, while simultaneously breaking the rules to create thrilling departures from tradition.

For over 20 years, we have built a strong sense of self around the same ideas captured in our name, and we express this identity through three uncompromising values that guide our everyday operations: quality, innovation and sustainability.

OFFECCT has its headquarters and production in Tibro, a small town nestled between Sweden's two largest lakes, where the rich forests of pine, spruce and birch have given the town a long history of furniture production. We find Tibro to be the ideal place for Swedish craftsmanship to merge with international innovation. Here we are surrounded by Swedish solutions for public and private spaces and inspired by their smart functionality and congruity with nature.

Our base gives us access to the Scandinavian legacy of furniture production and design, and while we certainly aim to uphold this reputation of elegance and simplicity, we also feel called to challenge and expand it.

We strive to create intelligent designs that merge seamlessly into their surroundings while still vitalizing people and encouraging idea sharing. At the same time, we do not aim to be understated or pleasantly passed-by.

We imagine our work as exclamation points in time and space – something that makes people slow their pace, take notice, stay perhaps for some time, and feel inspired.





We approach this challenge by working with international designers who are among the best in their fields worldwide. In collaboration with them, we can unleash our sense of unlimited possibility, knowing that we are always firmly grounded in standards of excellence.

Together with our designers, we begin each new process by allowing our customers to draw the box in which our creativity can flourish. We strive to be open and sensitive to the needs of individuals, shaping our solutions based on their criteria.

This openness is an important key for our approach to design, certainly when it comes to creating spaces that invite and welcome, but on a deeper level as well. For us, openness also extends to honesty and transparency in production. This is why we choose recyclable materials and make very specific efforts to work efficiently and reduce waste and unnecessary transportation.

We are careful to protect our ecological values, and also believe that working sustainably reflects an awareness and recognition of our changing world and the preciousness of its resources.







Sustainable development



19

At OFFECCT we believe that every company can and should take responsibility to protect the world's resources and to minimize its environmental footprint. With the Swedish forest at our back door, we have a deep respect for the resources used by our work. Our environmental strategy is just as crucial for the final product as the design and quality, and our sustainability methods are embedded in every step of the work process, from manufacturing and production to transportation and disposal.

Today, OFFECCT's production center in Tibro is the place where Scandinavian design traditions are both preserved and challenged as we experiment with eco-friendly materials and new techniques in our quest to surpass our customers' expectations.



OFFECCT is proud that a large part of its collection bears the Nordic Ecolabel, a hard-won stamp of approval from both an environmental and a public health perspective.

OFFECCT
is certified in
accordance with
SS-EN ISO
14 001:2004





Quality and production

Having our production center in Tibro also means that we are close enough to touch the perfectly rounded curve of an elbow rest and know that quality is not an abstract concept. It is a combination of competence, thoroughness and attention to detail in every step.

As the production process progresses, it is an advantage that our talented production personnel are in close personal contact with our showrooms and headquarters. This means that expert knowledge can flow quickly throughout the organization and feedback from customers can easily be transformed into permanent improvements in both our operations and quality.

We see quality as a measure of our performance from the customer's standpoint and we aspire to infuse our values and our heritage into every product we create. The results are here before you in this catalogue. We welcome any challenge you may have for us.



Collection 2010



Easy chairs























Sofas













Chairs

















Tables













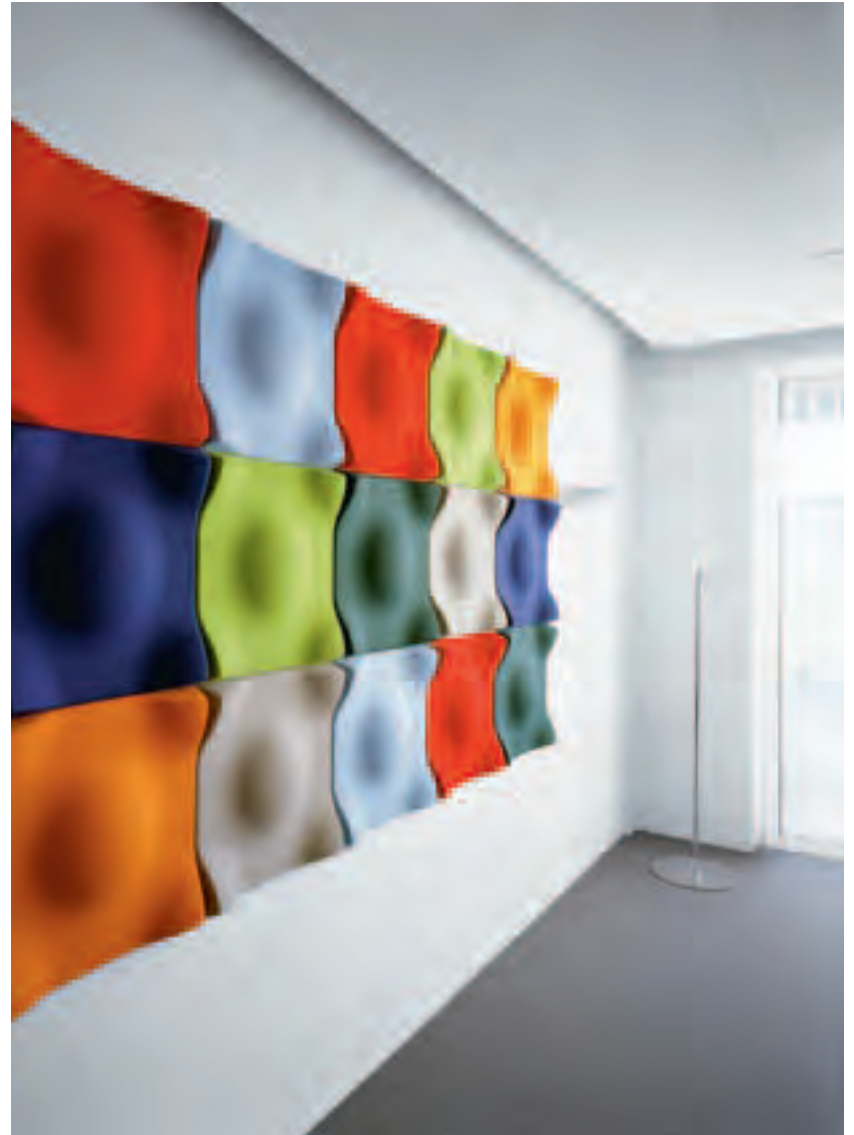


The image shows a close-up of a wall covered in pink acoustic foam panels. Each panel has a distinctive wavy, wave-like shape. In the foreground, a portion of a pink sofa is visible, with a patterned pillow resting on it. The pillow features a complex, repeating geometric pattern in shades of pink and black. The overall scene is brightly lit, emphasizing the texture and color of the materials.

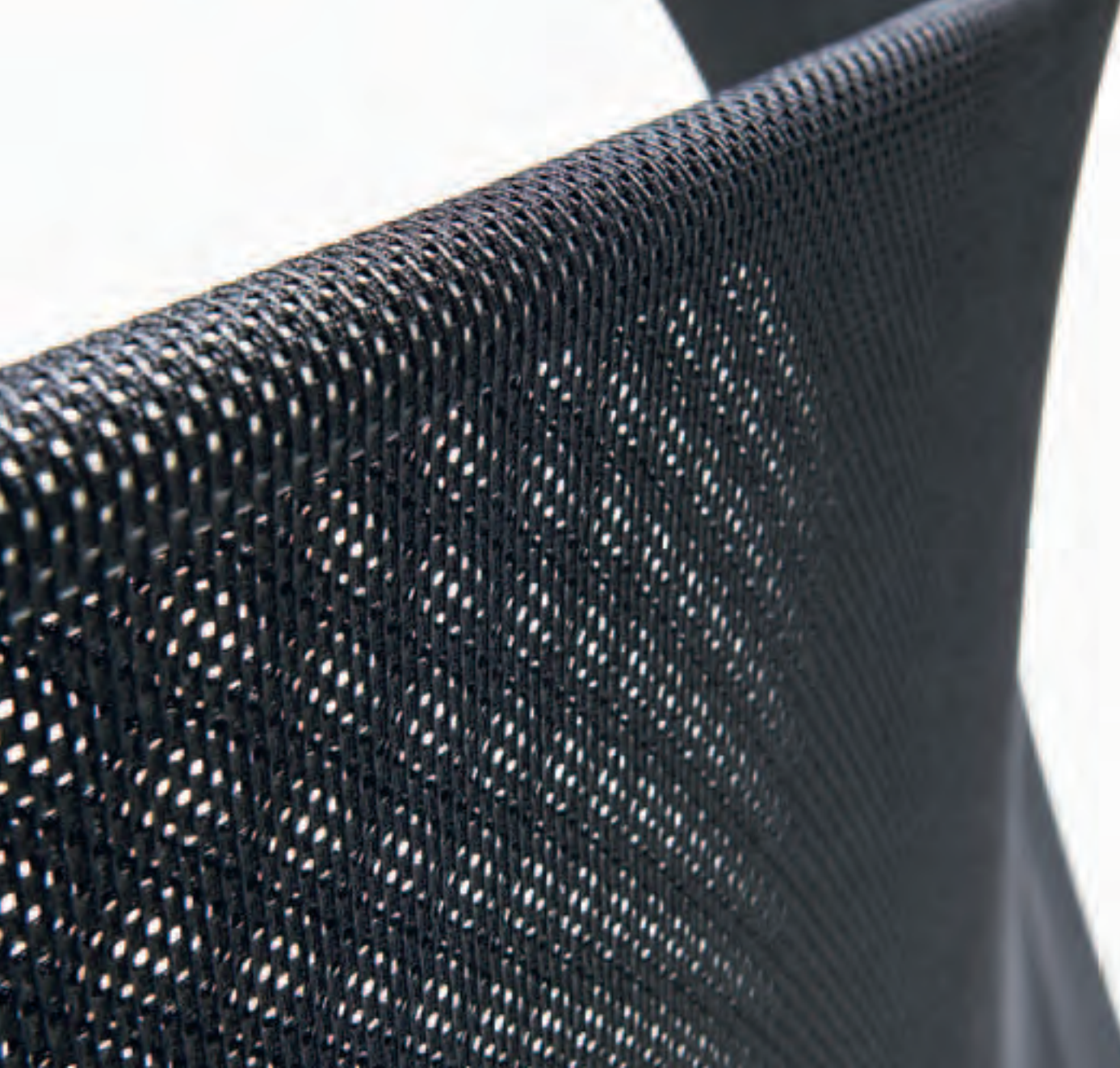
Soundwave











Room dividers

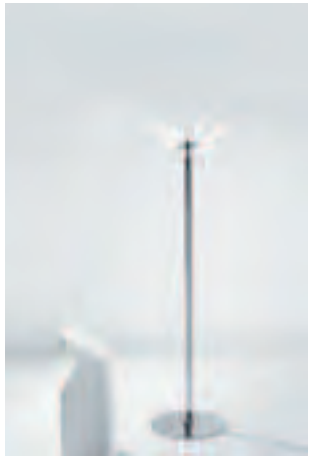






Accessories







Alfredo Häberli
www.alfredo-haberli.com

Andrea Ruggiero
www.andrearuggiero.com

Beat Karrer
www.beatkarrer.com

Björn Dahlström
www.dahlstromdesign.se

Broberg & Ridderstråle
www.brda.se

Carlos Tíscar
www.carlostiscar.com

Christophe Pillet
www.christophepillet.com

Claesson Koivisto Rune
www.claesson-koivisto-rune.se

Ineke Hans
www.inekehans.com

Ingunn Eikeland Bjørkelo

Jean-Marie Massaud
www.massaud.com

Karim Rashid
www.karimrashid.com

Katrin Greiling
www.katringreiling.com

Khodi Feiz
www.feizdesign.com

Luca Nichetto
www.lucanichetto.com

Marre Moerel
www.marremoerel.com

Michael Sodeau
www.michalsodeau.com

Mika Tolonen
www.mikatolonen.com

Mikko Laakkonen
www.mikkolaakkonen.com

Monica Förster
www.monicaforster.se

Olle Anderson
www.olleanderson.se

Patrick Norguet
www.patricknorguet.com

Satyendra Pakhalé
www.satyendra-pakhale.com

Teppo Asikainen
www.valvomo.com

Teruhiro Yanagihara
www.isolationunit.info

Thomas Sandell
www.sandellsandberg.se

OFFECCT SHOWROOM Stockholm
Torsgatan 13
SE-111 23 Stockholm
Phone: +46 (0)8-410 516 70
E-mail: showroom.stockholm@offecct.se

OFFECCT SHOWROOM Copenhagen
Hauser Plads 30B
DK-1127 Copenhagen K, Denmark
Email: showroom.copenhagen@offecct.se

OFFECCT SHOWROOM Oslo
Skøyen, Drammensveien 130 B13
N-0277 Oslo, Norway
Email: showroom.oslo@offecct.se

See www.offecct.se for a full list of sales representatives.





тел.: (812) 528 0265, 942 5979
info@bogart.ru www.bogart.ru

ОРГАНИЗАЦИЯ РАБОЧЕГО ПРОСТРАНСТВА
ОСНАЩЕНИЕ ОБЩЕСТВЕННЫХ ЗДАНИЙ

OFFECCT AB
Head office, production, sales department and showroom
Box 100
SE-543 21 Tibro
Phone: +46 (0)504-415 00
Fax: +46 (0)504-125 24
E-mail: support@offecct.se | order@offecct.se
www.offecct.se

Delivery address:
Grönhultsvägen 3B, SE-543 51 Tibro



- Amazonas, tables 82
 Basic, tables 83
 Bird, table 84
 Bond, armchair 68
 Bond, barstool 68
 Bond, chair 68
 Bond, chair with castors 68
 Bond, easy chair 32
 Bond, tables 85
 Bond Light, armchair 69
 Bond Light, chair 69
 Bond XL, table 85
 Canti, chair 70
 Cloud, portable meeting room 109
 Club, easy chair 33
 Cornflake, armchair 71
 Cornflake, bar tables 86
 Cornflake, barstool 71
 Cornflake, chair 71
 Cornflake, tables 86
 Droplet, table 87
 Easy Block, sofa 54
 Etage, tables 89
 Float, easy chair 35
 Float, sofa 55
 Float High, easy chair 35
 Float High, sofa 55
 Flower, stool 114
 Flower Medi, stool 114
 Flower Mini, stool 114
 Fly, easy chair 34
 Forest, room divider 110
 Ghost, easy chair 36
 Ghost, sofa 56
 Grip, table 88
 Grow, sofa system 57
 K-line, coat stand 116
 K-line, mirror 116
 K-line, paper bin 116
 K-line, smallhanger 116
 K-line, trolley 116
 K-line, umbrella stand 116
 K-line, wall hanger 116
 King, chair 72
 King, easy chair 37
 King, sofa system 58
 Louis IX, easy chair 38
 Louis IX, armchair 73
 Louis IX, chair 73
 Minima, corner sofa 61
 Minima, divan 61
 Minima, easy chair 40
 Minima, sofa 60
 Minima, stool 61
 Mod, armchair 74
 Mod, chair 74
 Mono Light, barstool 75
 Mono Light, chair 75
 Mono Light, easy chair 75
 Nemo, easy chair 41
 Nemo, sofa 59
 Orbit, easy chair 42
 Orbit, sofa system 62
 Orgy, sofa 63
 Origami, chair 43
 Origami, stool 43
 Outline, table 90
 Oyster, easy chair 44
 Oyster, stool 44
 Oyster High, easy chair 44
 Palma, easy chair 45
 Palma Meeting, chair 76
 Palma Meeting, swivel chair 76
 Pick Up, mini truck 117
 Playback, sofa system 64
 Propeller, bar tables 91
 Propeller, tables 91
 Qool, barstool 77
 Queen, easy chair 46
 Quick, armchair 77
 Quick, chair 77
 Quilt, armchair 77
 Robo, chair 78
 Smalltown, easy chair 47
 Smalltown, sofa 65
 Snowflakes, tables 92
 Solichair, easy chair 48
 Solitaire, easy chair 48
 Soundwave® Flo 98
 Soundwave® Geo 99
 Soundwave® Luna 100
 Soundwave® Scrunch 101
 Soundwave® Skyline 102
 Soundwave® Swell 103
 Soundwave® Village 104
 Sparks, magazine holder 115
 Sparks, wall hanger 115
 Spinnaker, room divider 111
 Spoon, easy chair 49
 Spoon, stool 49
 Spoon Low, easy chair 49
 Tempo, easy chair 50
 Tinto, easy chair 51
 Toffee, barstool 79
 Tray, table 93
 Vertigo, table 94
 Window, table 95

 INTRODUCED IN 2010
 Bond XL, table 85
 Canti, chair 70
 Club, easy chair 33
 Droplet, table 87
 Fly, easy chair 34
 Minima, corner sofa 61
 Minima, divan 61
 Minima, easy chair 40
 Minima, sofa 60
 Minima, stool 61
 Mod, armchair 74
 Mod, chair 74
 Origami, chair 43
 Origami, stool 43
 Oyster, stool 44
 Robo, chair 78
 Snowflakes, tables 92
 Soundwave® Geo 99
 Spoon, stool 49

ART DIRECTION AND GRAPHIC DESIGN

Markus Moström Design, Wolfgang design

PHOTOGRAPHY

Åke E:son Lindman, page 10–11, 14

Åke E:son Lindman / Project Law firm Lindahl. Andreas Martin-Löf Architects, page 9

Åke E:son Lindman / Project SCA Stockholm Waterfront. SandellSandberg Architects, page 16–17

Johan Fowelin, page 13, 18, 23, 118–119, 125

Luc Boegly / Project Axel Schoenert. Architectes Associés, page 15

Patrik Johäll, page 18

Tord-Rikard Söderström, page 22

Markus Moström, page 26–27, 30–31, 52–53, 66–67, 80–81

Patrik Engström, page 123

Product photography by Johan Fowelin, Peter Råberg, Patrik Johäll



CLIMATE
COMPENSATED
PAPER

